

YEAR 2015

CORE STATION 5035

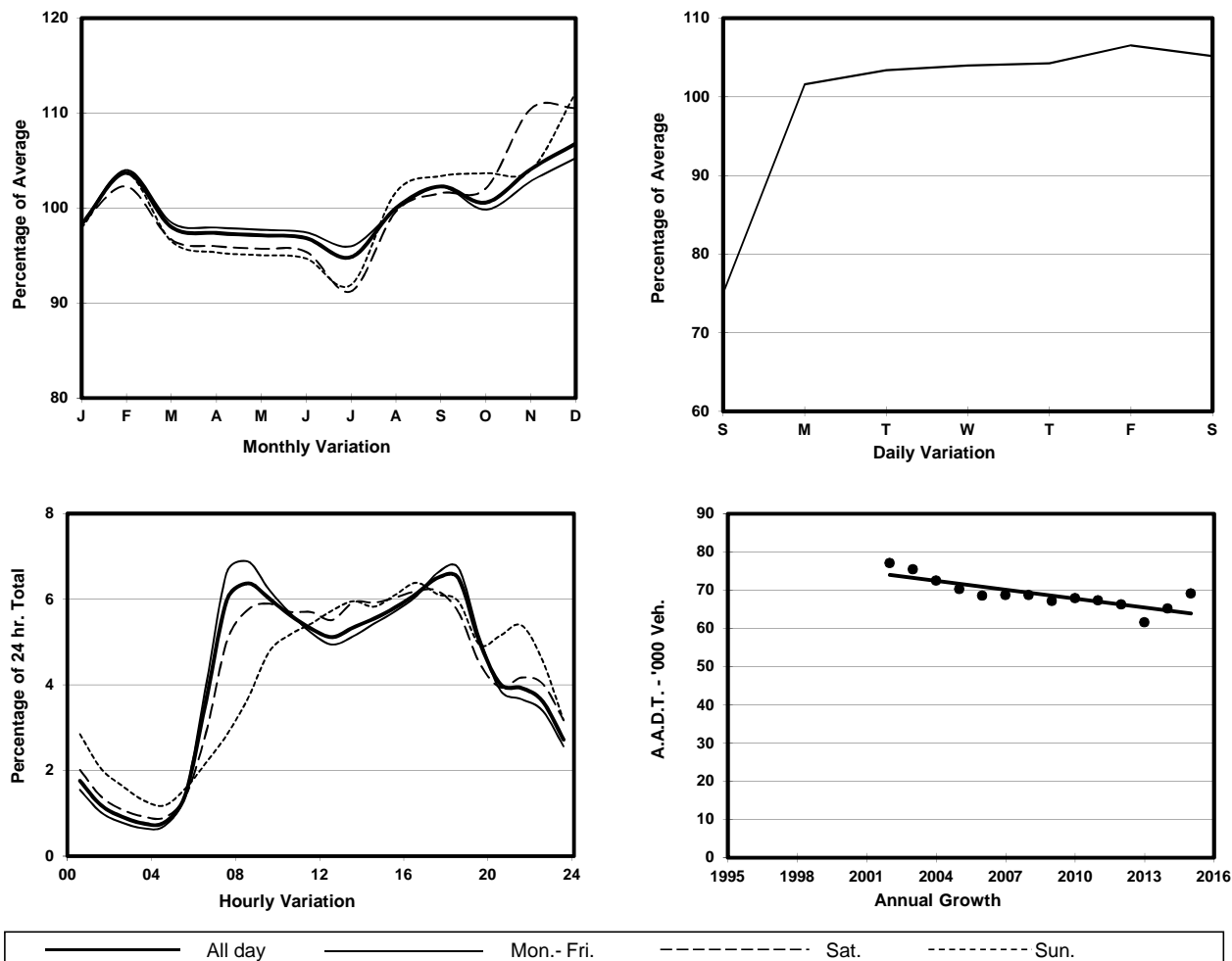
ROAD NETWORK MAJOR

ROAD TYPE EXPRESSWAY

LINK TUEN MUN RD (from CASTLE PEAK RD - TSUEN WAN to TSING LONG HIGHWAY - TING KAU BRIDGE)



1. TRAFFIC FLOW VARIATION AND GROWTH



2. TRAFFIC CHARACTERISTICS (BY DIRECTION)

Parameter	All - Day	Mon. - Fri.	Sat.	Sun.
EAST BOUND				
A.A.D.T.	34750	36720	36830	26120
R 12 / 24 - %	73	73.9	72.3	67.7
R 16 / 24 - %	85.7	85.8	86	84.9
AM Peak Hour	0700-0800	0700-0800	0800-0900	0900-1000
One-way flow at AM peak hour	2750	3240	2580	1560
T - % (AM)	-	-	-	-
PM Peak Hour	1700-1800	1700-1800	1600-1700	1700-1800
One-way flow at PM peak hour	2100	2240	2180	1580
T - % (PM)	-	-	-	-
Prop.of commercial vehicles - 16 hr.	-	-	-	-
WEST BOUND				
A.A.D.T.	34330	36090	36710	26430
R 12 / 24 - %	67.5	68.6	66.8	60.4
R 16 / 24 - %	87.9	88.9	86.5	83.2
AM Peak Hour	0900-1000	0900-1000	0900-1000	0900-1000
One-way flow at AM peak hour	1780	1960	1870	950
T - % (AM)	-	-	-	-
PM Peak Hour	1800-1900	1800-1900	1800-1900	1600-1700
One-way flow at PM peak hour	2760	3080	2480	1770
T - % (PM)	-	-	-	-
Prop.of commercial vehicles - 16 hr.	-	-	-	-

3. OTHER INFORMATION AND COMMENT